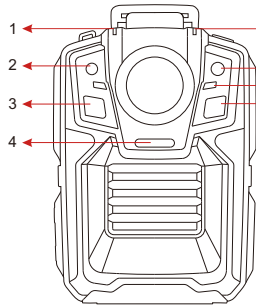


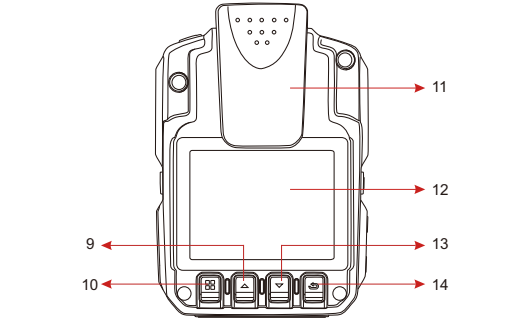
## 1. Device Features

- 4G/WiFi
- Night vision
- 1080P HD
- Video recording
- Photo taking
- Audio recording
- GPS tracking
- Audio, video and photo playback
- Video files split for safer storage

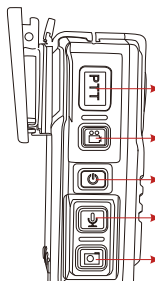
## 2. Device overview



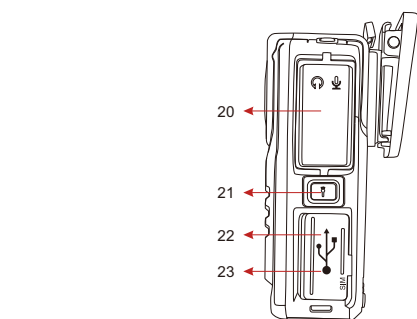
- 1.Charging indicator
- 2.Laser light
- 3.IR light
- 4.Fill flash
- 5.Working indicator
- 6.Light sensor light
- 7.MIC
- 8.IR light



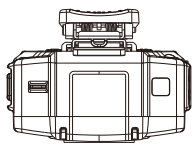
- 9.Up
- 10.Menu key/Confirmation key
- 11.Back clip
- 12.Display screen
- 13.Down
- 14.Back/Local playback



- 15.PTT
- 16.Video button/Alarm key
- 17.On/Off button
- 18.Recording button
- 19.Camera button/White light



- 20.Multifunctional interface
- 21.IR/Laser
- 22.USB
- 23.SIM card slot
- 24.Battery



- 25.Camera button/White light
- 26.PTT
- 27.Video button/Alarm key
- 28.On/Off button
- 29.Recording button

## 3. Keys & Buttons illustration

Key/Button	No.	Operation	Operation
On/Off button	18	Momentarily press	Turn on/off screen protection
		Press and hold	Power off
PTT	16	Momentarily press	Push to talk
Video button/Alarm key	17	Momentarily press	When device power on , momentarily press to start and end video recording.
		Press and hold	If 4G is enabled, press and hold video to connect to the control center.
Recording button	19	Momentarily press	In standby mode, momentarily press to start and end audio recording
		Press and hold	Long press the recording button at Standby mode, get in early warning status. Press again the video upload to Serve.
Camera button/White light	20	Momentarily press	In standby mode, momentarily press to take photos.
		Press and hold	On/off
IR/Laser	22	Momentarily press	In standby mode, momentarily press to turn on/off laser.
		Press and hold	In standby mode, momentarily press to turn on/off IR.
Multifunctional interface	21	Connection	Connect headphones, camera, etc.
SIM	24	Slot	Insert SIM
USB	23	Connection	Data transmission and charging
Menu key	10	Momentarily press	In standby mode, momentarily press to enter the menu.
Up	9	Momentarily press	Flip up
Fast backward		Momentarily press	Fast backward
Down	14	Momentarily press	Flip down

Fast forward	14	Momentarily press	Fast forward
Back/Local playback	15	Momentarily press	In menu and file page, momentarily press it to return. In standby mode, momentarily press it to playback video, photo, and audio file.

## 4. Specifications

Compatible operating system	Windows 98/2000/ME/XP/Windows7/Windows8
LCD display screen	HD 2.0 inch
Wide angle vision	130°
Photo format	JPG
Infrared night vision	Manual/automatic switching optional; visible range8 meters, able to catch human face contours in full dark night
Picture resolution	7680*4320 4608*3456 4608*2592 3840*2160 3072*1728 2048*1536
video resolution	1920*1080 1280*720 864*480 640*480 480*320
storage capacity	Standard Built-in GB SD Card; 128GB Maximum Support
Video frame rate	30 FPS
Video format	H.264 Compression format(AVI, MP4)
White balance	✓
Dimension	85mm*60mm*31mm
Weight	170g
Battery Capacity	1800mAh * 2pcs
Standby time	24 hours
Battery Endurance	4 hours on each replaceable battery
Supplementary light	Infrared illuminator, highlight LED flash, laser positioning
Record function	✓
Working temperature	-30~55℃
Operational relative humidity	40%-80%

## 5. Accessories

- User Manual \* 1
- USB Cable \* 1
- Short Back Clip \* 1
- Long Back Clip \* 1
- Platform User Manual CD \* 1
- Charger (5V1A) \* 1
- One Slot Charging Base \* 1
- One Rechargeable battery \* 1
- Car Charger \* 1

## 6. Charging

When the blue light of charging base is on, body worn camera is charged.  
At the same time, the charging indicator of body worn camera will be on: .  
Red light indicate charged; Green light indicate the battery is full charged.

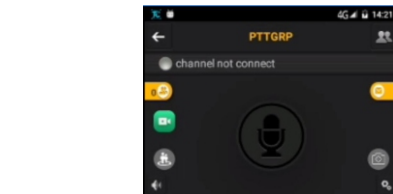
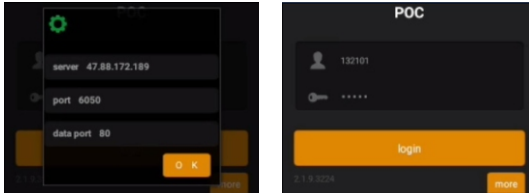
When the red light of charging base is on, battery is charged.

## 7. Device operation

### 7.1 Intercom

Touch "Intercom", enter account and password to login;  
(Note: intercom groups provided by company)

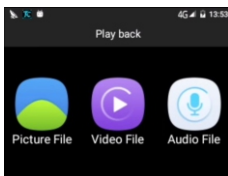
User Login - Set parameters: (Please contact seller for Latest parameters)  
Click more relevant settings  
Server: Input the server IP address  
Port: Input the server communication port after entering, click Login  
Data port: Input the data exchange port



- PTT Group: View group member status. Call, speak or text to members.
- Channel list: You can join or leave a channel as well as create and edit group.
- General settings.
- Microphone and loud speaker switch.
- Press to talk, release to send.

### 7.2 Playback

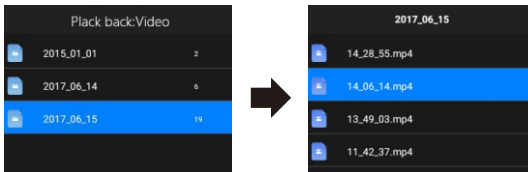
View pictures, videos, and audio files.



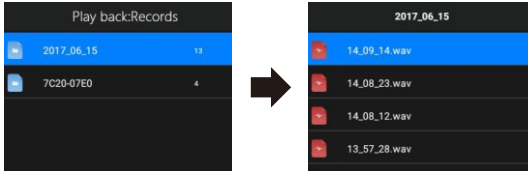
#### 7.2.1 Picture playback



#### 7.2.2 Video playback



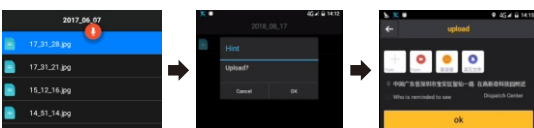
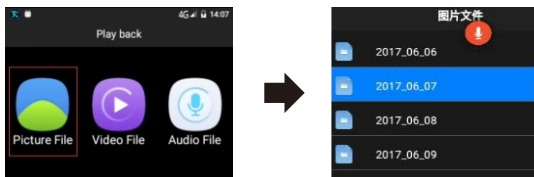
#### 7.2.3 Audio playback



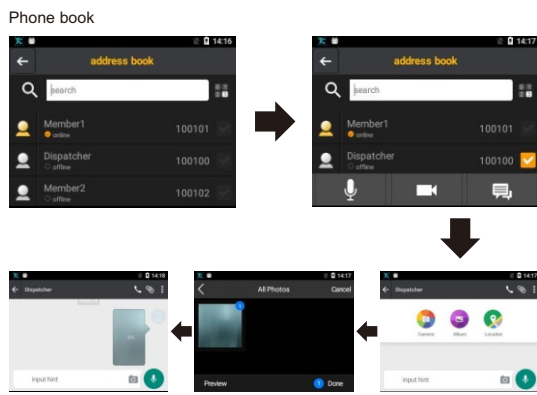
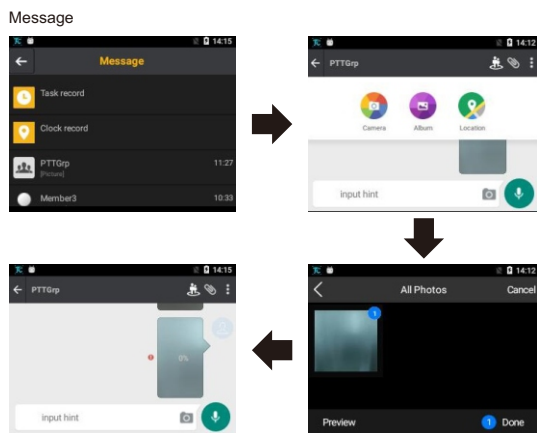
## 7.3 File Upload

The video, photo, recording, and other files in the TF card can be uploaded to the multimedia command center server.  
The two modes of File Upload:

- One mode is to enter the file upload, click on the existing file in the list to upload,Click "OK" to report in time



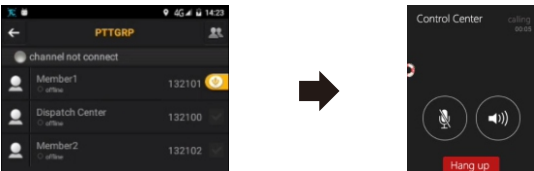
- Another mode: from the Message / Phone book / file upload menu to the "shooting interface" live shooting recording  
Click "Done" to report in time  
As shown below:



## 7.4 Address Book

In the address book, all the members in the organization and basic information and status can be viewed. You can also make voice call, video call, text messages, and view this member's real-time location.

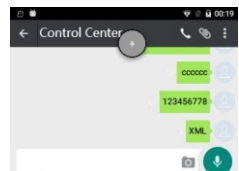
Click to initiate a two-way voice call  
Voice call interface as shown below:



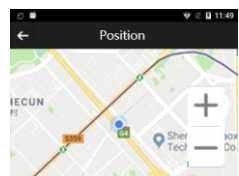
Click to initiate a video call  
Video call interface as shown below:



Click to send message to member or group



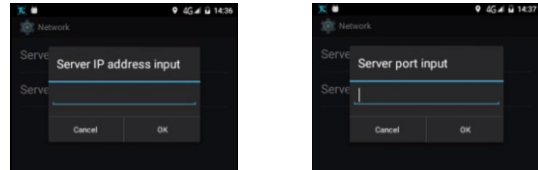
Click to check the its location



## 7.6 Setting

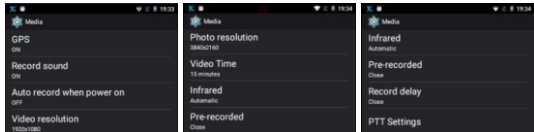
There are network settings, media settings, and system settings.  
Press UP and Down key to select.

### 7.6.1 Network Setting



### 7.6.2 Media setting

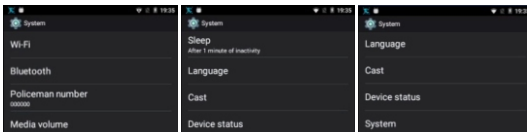
**GPS:** ON / OFF.  
**Video sound:** ON / OFF.  
**Video recording when device power on:** ON / OFF.  
**Video resolution:** default is 1080P (1920 \* 1080P).  
**Photo resolution:** default is 3840 \* 2160  
**Video time:** The default recording time is "3 minutes", there are "3 minutes, 5 minutes, 10 minutes, 15 minutes" for you to choose. The video will be saved automatically in set interval.  
**Infrared:** the default is automatically, two modes optional, "automatic and manual", according to the situation to select the appropriate mode.  
**Pre-record:** default is off. There are "power off, 5 seconds, 15 seconds, 30 seconds" optional.  
**Record delay:** Default off, "off, 5 seconds, 15 seconds, 30 seconds" are optional.  
**Button Sound:** There are "ON and OFF" options. Press the up and down keys to select the suitable mode, press the Enter key to confirm.



### 7.6.3 System setting

**WiFi:** Default off.  
**Bluetooth:** Default off.  
**Multimedia Volume:** Adjust the volume by sliding left and right.  
**Brightness:** You can adjust the screen brightness by sliding left and right.  
**Sleep:** default is 1 minute. There are off, 15 seconds, 30 seconds, 1 minute, 2 minutes, 5 minutes, 10 minutes and 30 minutes for your options.  
**Language:** Chinese (Traditional), Chinese (Simplified), English

**Projection:** Projection screen. You can search for device to connect automatically for synchronized operation.  
**Device info:** View status information, legal information, model, version number and so on.



For more information please visit <http://www.jimilab.com>.

\* This guide is for reference only and does not constitute any form of commitment, products (including but not limited to color, size, screen display, etc.) please refer to the actual product.

## JIMI Judge V5 4G Body-worn Camera

### User Manual (Version 1.0)



Thank you for purchasing our product. Please read this manual carefully before use and keep it for future reference.