

JC100 EdgeCam

--3G GPS Tracking Camera

User Manual



Version 1.3

1.JC100 Illustration

Packing List



JC100



Holder

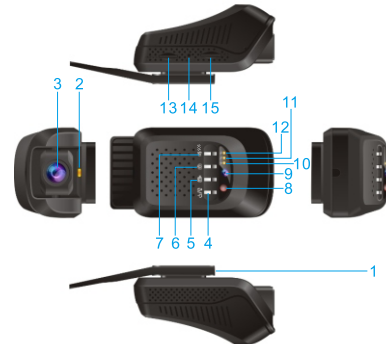


2* 3M stick



Bolt

2.Overview



Notice

1. Use the supply line that comes with the device to connect with vehicle battery.
2. For safety, do not operate the device while driving.
3. Do not disassemble the device unless under specialized guidance.
For any device or accessory problems, please contact the local distributor for help.
4. Device damage and faulty operation may arise if push buttons with sharp objects like needle or pen;
5. Do not wipe the device by alcohol, diluent, benzene, etc.
6. Do not store the device under extreme high or cold temperature (Working temperature: $-30^{\circ}\text{C}\sim+65^{\circ}\text{C}$).

- | | | |
|-----------------|-----------------------|-------------------------|
| 1. Holder | 2. Alarm indicator | 3. Forward camera |
| 4. Power/Record | 5. Snapshot for video | 6. Snapshot for picture |
| 7. SOS/Speaker | 8. Infrared lamp | 9. Inward camera |
| 10. Power LED | 11. GPS LED | 12. GSM LED |
| 13. TF card | 14. Reset | 15. SIM card |

3.Buttons

1.Power

Long press it to turn on/off and reboot the device. Momentarily press it to begin / stop sound recording.

2.Recording: Momentarily press it to record a 15-second long video which will be saved to the DVRMEDIA\CarRecorder\EVENT.

Unlike collision video file, the name of manual video records begins with "KEY_".

3.Snapshot

Momentarily press it to take a picture by main camera. Photos will be saved to DVRMEDIA\CarRecorder\ PHOTO (100MB) and will be overwritten when the folder is full.

4.SOS/Speaker

Momentarily press it to turn ON/OFF warning tone.

Keep press it for 3 seconds to trigger SOS alarm.

	Live view	In-car / front-car live video streaming via APP	P2P live view
	GPS Tracking	Platform and App	PC Platform: www.car-matrix.com APP: CarMatrix
	Camera	Forward Camera	Full HD 1080P, adjustable viewing angle 140°
		Inward Camera	640*480, viewing angle 90°, black-white-color night vision
	G-Sensor	Support	BMA223/BMA250
	MIC & Speaker	Support	Built-in, speaker 2030, MIC D4.0*1.5
	TF card	Max 32GB	
Power	Voltage	DC12-33V	
Size	Dimension	75*55*45mm	
	Weight	135g	

4.Function

Category	Item	Specification	Remark
Hardware	CPU	ARM Cortex A7 Quad-Core 1.3GHz	MT6580
	OS	Android 5.1	Android 5.1 open source system
	Flash	eMMC Flash 8G	
	RAM	DDR3L 1GB	Frequency 533MHz
	Band	GSM & WCDMA	GSM: 850/900/1800/1900 WCDMA: 850/900/1900/2100
Function	DVR	Full HD 1080P/720P	30fps,H.264 encoding, Loop-Recording
	Wi-Fi	802.11 b/g/n	Frequency 2.4 GHz, hotspot
	Remote monitoring	APP	APP: CarMatrix

5.Operation

1. Power ON/OFF

- 1) Connect the supply wires B+ and GND to the vehicle battery's positive pole and negative pole. ACC is connected with the vehicle ignition signal. Device power on automatically after vehicle engine started.
- 2) When the vehicle is off, long press Power button for 3 seconds to power on/ off the device.

2.Indicators

1.1 Power: Red

--- Initialization: solid red

---ACC ON: solid red

---ACC OFF: flickers slowly

1.2 GPS: Yellow

---ACC ON: GPS indicator flickers (not positioning); GPS indicator is always on when GPS located.

---ACC OFF: GPS indicator OFF

1.3 GSM: Blue

---ACC ON: GSM indicator is always on if network searched.

If no SIM card or the inserted SIM card can't find the network, then the indicator will blink.

---ACC OFF: indicator OFF

1.4. Alarm indicator: Blue

---Ignition: OFF

---Vehicle is off and device is in Vibration Defense Status: the indicator blink every 10 seconds. Indicator blinks quickly when alarm rings.

3.SD card and SIM card installation

Correctly insert the SD card and SIM card.

To take out the card, just gently push it and it will pop out.

6.DVR

1)Video recording

ACC ON

Device runs and records automatically

ACC OFF

Video recording is not available. Device is in sleeping mode.

2)Storage

Video footage will be saved in TF card every 3 minutes. When SD card is full, previous records will be overwritten. Normally, footages are saved in DVRMEDIA\CarRecorder\GENERAL.

If strong vibration detected (like crash), the recording time will be 15s

longer and footage will be saved to DVRMEDIA\CarRecorder\EVENT. Memory of the folder EVENT is 1GB. Records in EVENT will be cyclically overwritten.

Recording is not available if no SD card detected or SD card is almost full. In this case, a warning tone will be sent out by system every 5 minutes.

3)Other operations

Operations like snapshot and video recording are available when the device is running.

7.Vibration alarm

ACC OFF

The device will enter into Vibration Defense Status in 5 minutes after the vehicle's engine stopped. Under the Vibration Defense Status, when the device detects vibration:

- a) If the car engine is not on within 15 seconds, vibration alarm will be triggered for 10 seconds. In this case, alarm indicator flickers quickly and notification will be sent to APP.
- b) Vibration alarm will be turned off as soon as the vehicle starts within 15 seconds.

When vibration alarm finished, the device will enter into Vibration Defense Status again after 1 minute. (If vibration detected again within this 1 minute, the indicators will flicker but no alarm triggered.)

8.SOS Alert

In emergent case, press SOS for 3s to activate SOS alarm.

Then the device will call to preset SOS numbers and then dial the numbers in 3 circles until the call is picked up.

9.WIFI hotspot

ACC ON

Hotspot is default ON. Hotspot name is the IMEI while the password is the last eight digits of IMEI.

ACC OFF.

Hotspot off

10.Monitoring

Open [http: www.car-matrix.com](http://www.car-matrix.com) and enter account name and password to login. Devices bound, IMEI and other related information can be viewed on the page.

Open [http: www.car-matrix.com](http://www.car-matrix.com) and scan the QR code to download CarMatrix APP.

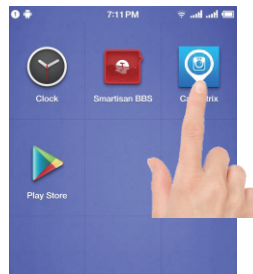
With CarMatrix, you can monitor more than one device by IMEI and keep an eye on your car anytime anywhere. Services like real-time location, historical route, geo-fence, remote snapshot and video, media synch, push notifications are all on your hand.

APP Manual

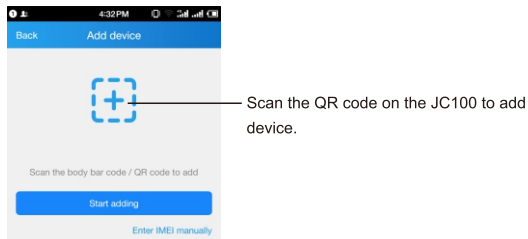
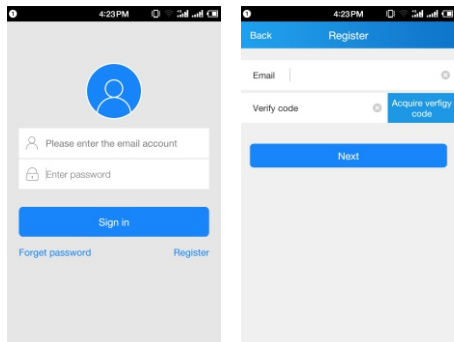
Coupled with functions like real-time tracking, playback, remote snapshot and video, monitoring, geo-fence and multiple alerts, CarMatrix APP keeps an eye on your vehicles anytime anywhere.

1.Login & Add device

After the installation is complete, tap the App CarMatrix to enter login page.



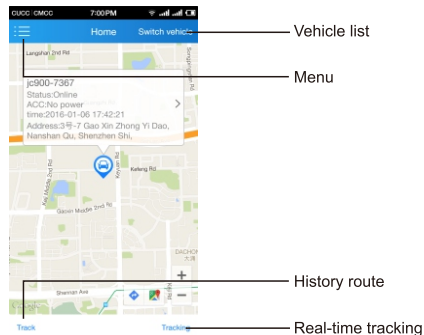
For first-time users, please register. Enter your email where verify code is about to send. Enter the code and click Next to set your password. Register is finished.



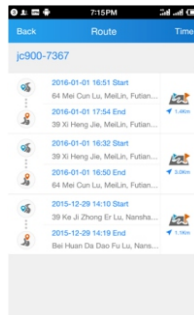
Scan the QR code on the JC100 to add device.

Homepage

Using your E-mail name and password to log in again, you can see the Homepage



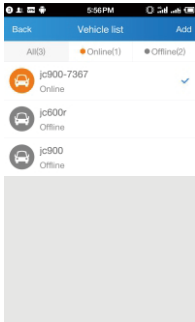
Click "track", "tracking", "Vehicle list", "☰", as shown below:



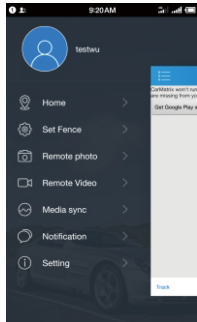
(Track: view playback history)



(Tracking: view real-time latitude, longitude and speed.)

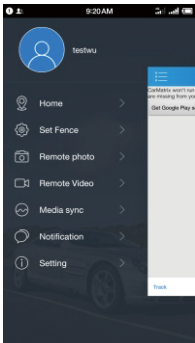


(Vehicle list: view all vehicle list of this account or switch to the other vehicle.)



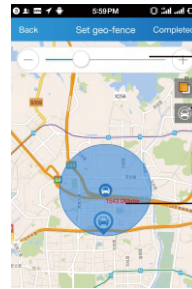
(Menu)

Menu introduction is as shown below:



Item	What it means
Home	Vehicle management, location, route
Set-fence	Geo-fence setting on/off
Remote photo	Issue command to take photo that would be sent to APP
Remote video	Issue command to record video and Live View
Media sync	Check the alert content
Setting	Wipe cache; Help; About

Click "Set-fence" in menu screen, as shown below:

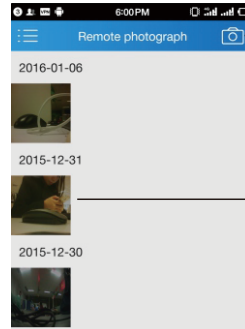


Modify the size of fence

Switch between the original geo-fence and the current vehicle location

Geo-fence zone

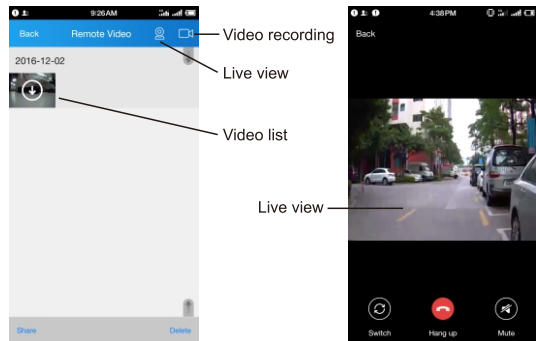
Click "Remote photo" in menu screen, as shown below:



Take a picture

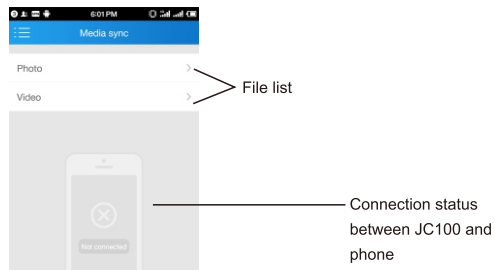
Photo list

Click "Remote video" and "Live View" in menu screen, as shown below:

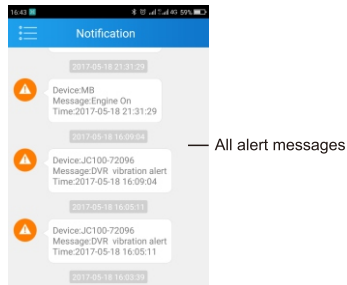


Live View needs 3G Network or better WIFI . If the Network speed does not meet this demand, the screen will be some non-smooth or delayed.

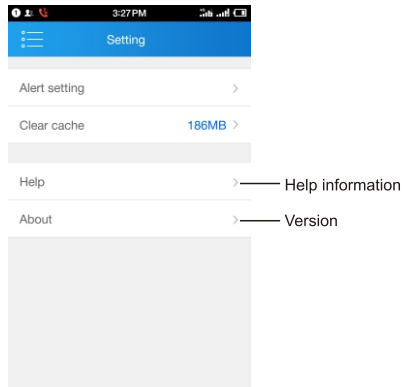
Click" Media sync" in menu screen, as shown below:



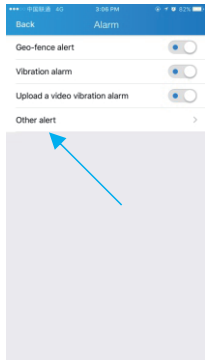
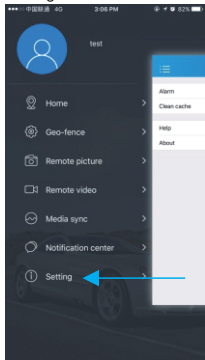
Click" Notification" in menu screen, as shown below:



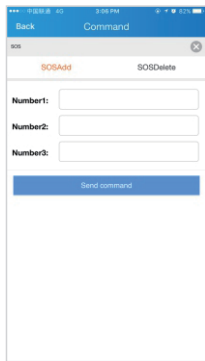
Click "Setting" in menu screen, as shown below:



Alert Settings Settings / Other Alert



Configure the alarm parameters as below. e.g.set SOS numbers



Appendix: Command List

Start of Command	Default	Command Format	Example
SERVER	No	SERVER#666666 #1#<domain name ># <port> OR SERVER#666666 #0#<IP>#<port>	eg: server#666666#1#gpsdev. car-matrix.com#21100 OR server#666666#0 #211.154.135.113#21100
APN		RESET#666666	Restore APN
VERSION	No	VERSION#666666	
PARAM	No	PARAM#666666	Reply: IMEI, GPS upload interval, time zone
STATUS	No	STATUS#666666	Reply: GPS signal, GSM signal, ACC status
HBT	3	HBT#666666#[T1]	eg: HBT#666666#5 means 5 minutes
TIMER	10	TIMER#666666 #[T1]	The unit for T1 is second
PASSWORD	666666	PASSWORD #666666#	eg: password#666666#123456
RECOVER	999999	RECOVER #999999	default password is 666666
RESTORE	No	RESTORE #666666	
REBOOT	No	REBOOT#666666	
SHUTDOWN	No	SHUTDOWN #666666	
VIBRATOR	4	VIBRATOR #666666#[0~255]	

CRASH	176	CRASH #666666#[0~255]	suggest set above 110
APN	No	APN#666666 #<name>#<apn> #<mcc> #<mnc>#<type> #<proxy>#<port> #<user>#<server> #<password> #<mmsc> #<mmsproxy> #<mmsport> #<numeric>	<p>We already collect most of carrier APN. If in case missed, setting with below method:</p> <ol style="list-style-type: none"> 1. If name is without figure, then default as APN 2. Numeric is mcc + mnc: <ul style="list-style-type: none"> mcc 3 digit; mnc 2 digit, if mnc below 2 digits, adding 0 ahead as supplement 3. If the back field are all without figure, then no need fill in. 4. If some are without figure during field, please use blank instead. <p>eg1: apn#666666#unim2m.gzm2mapn#unim2m.gzm2mapn#460#06</p> <p>eg2: apn#666666# #unim2m.njm2mapn#460#06</p>